

Upgrade Guidance For **FI8908W**

NOTE: Camera with 11.14.1.46, 11.14.2.17 and 11.14.2.28 cannot upgrade to this version, if your camera has the firmware above, please DO NOT upgrade it, otherwise, it will be bricked and need send to repair!!

1、 Please check your current firmware version of your camera.

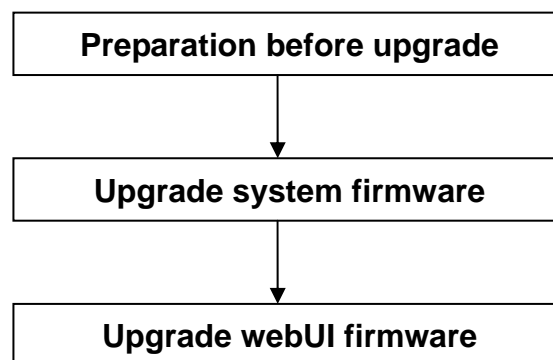
The new software we are going to update is:

System firmware version: 11.22.2.30

Web UI firmware version: 2.4.8.15

Caution:

Please make sure your camera model before upgrade, If you can't confirm the model of your camera, you can contact tech@foscam.com to confirm which model you have.



2、 Preparation before upgrade.

Plug the network cable and power for the camera.

Note: Please do not upgrade the camera when it works on wireless.

Plug the network cable and do the upgrade.

3、 Upgrade the system firmware first.

Click the right mouse on the ip in the IP camera tool and choose “**Upgrade Firmware**”.

Then you will see the picture below.

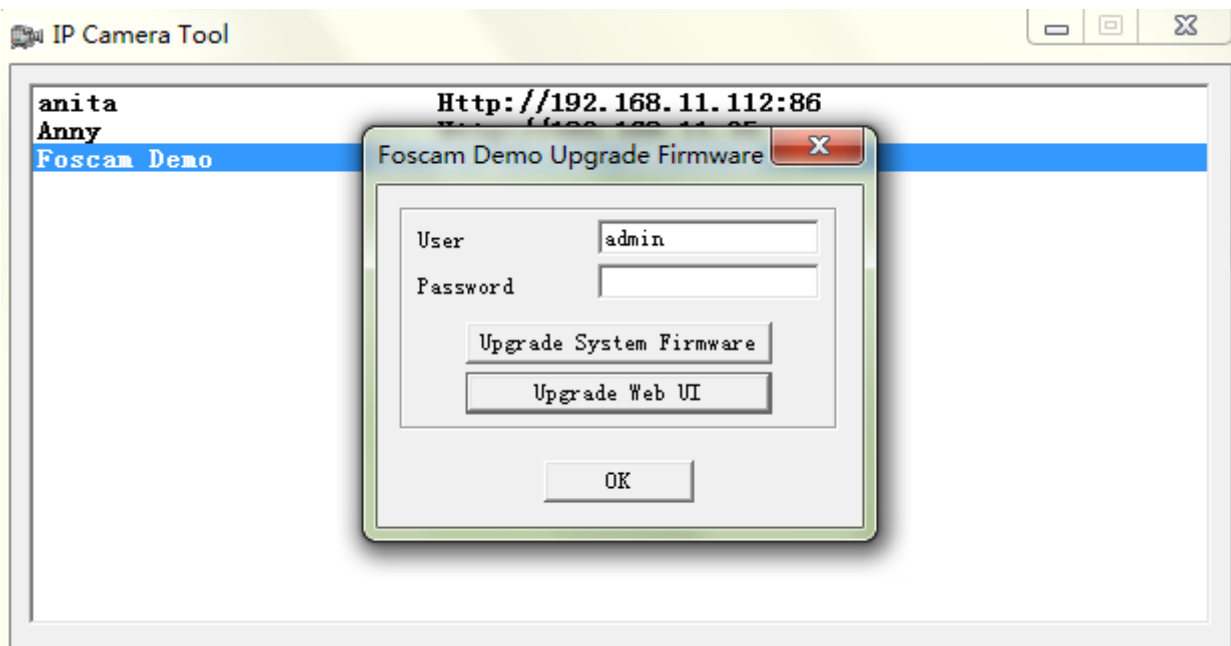


Figure 1.0

Fill in camera's user name and password, click **Upgrade System Firmware**, and then choose **lr_coms_11_22_2_30.bin** to upgrade.

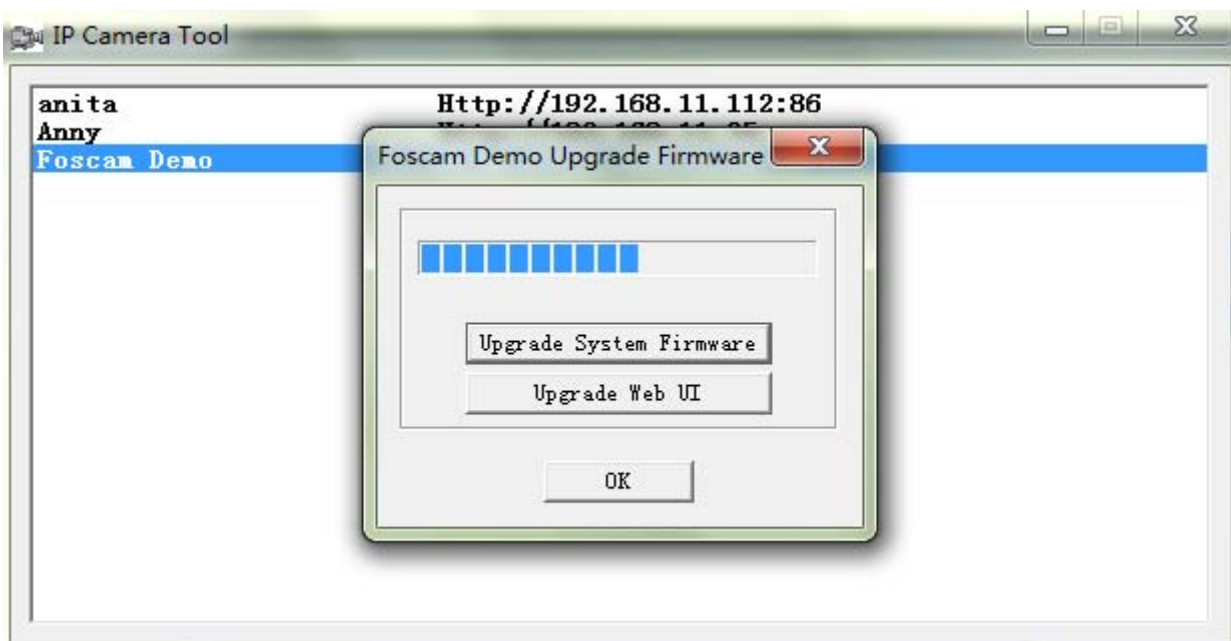


Figure 1.1

Caution: Please don't power off the camera before the IP camera tool find the camera again.

4、Upgrade the Web UI.

Wait about 60 seconds. IP Camera tool will find the camera's IP again.

Click right mouse on the IP and choose **Upgrade Firmware**.

Choose "**Upgrade Web UI**". (Figure 1.2)

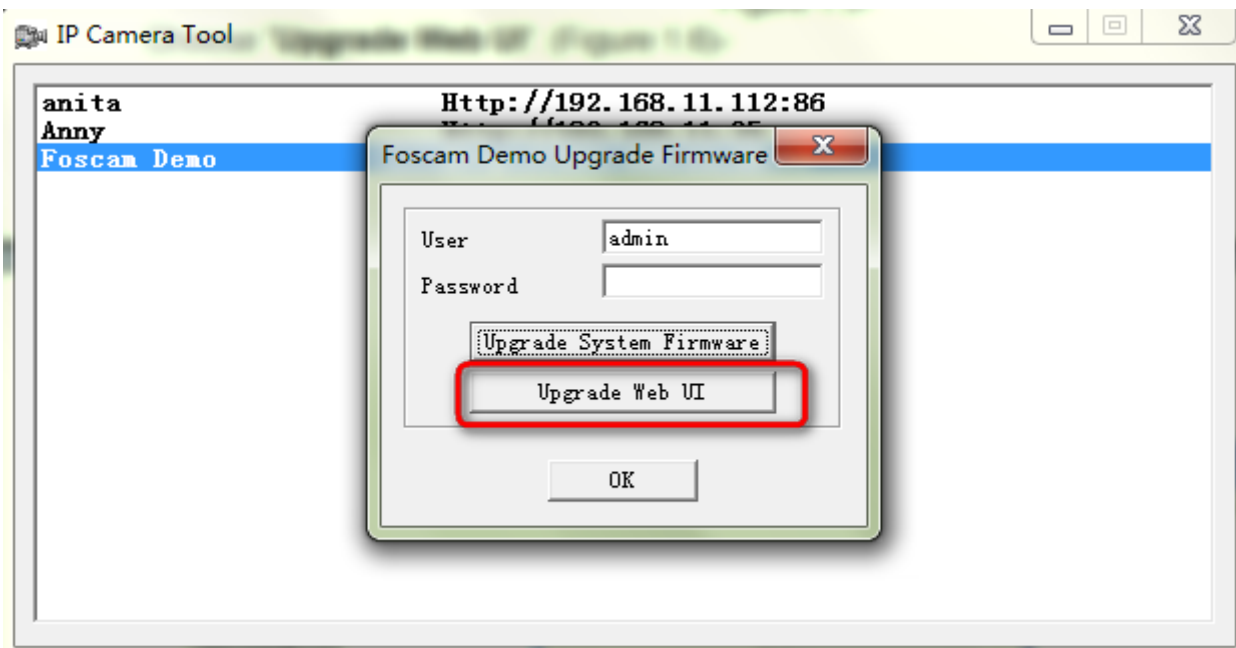


Figure 1.2

Then choose **2.4.8.15.bin** to upgrade.

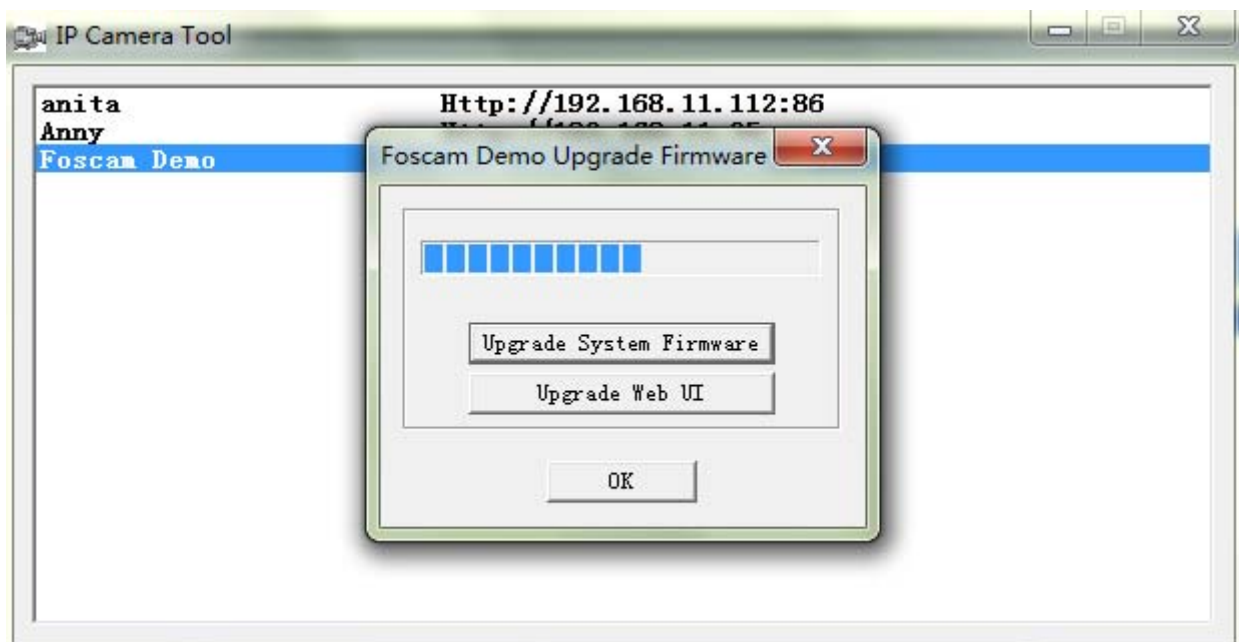


Figure 1.3

Do not shut down the power of the camera during the upgrade.

After you upgrade both the system firmware and Web UI, please check if the upgrade is successful.

Click the right mouse on the ip address and choose **“Basic Properties”**. Figure 1.4
Or enter the interface (for administrator) and check the Device Info (Figure 1.5).

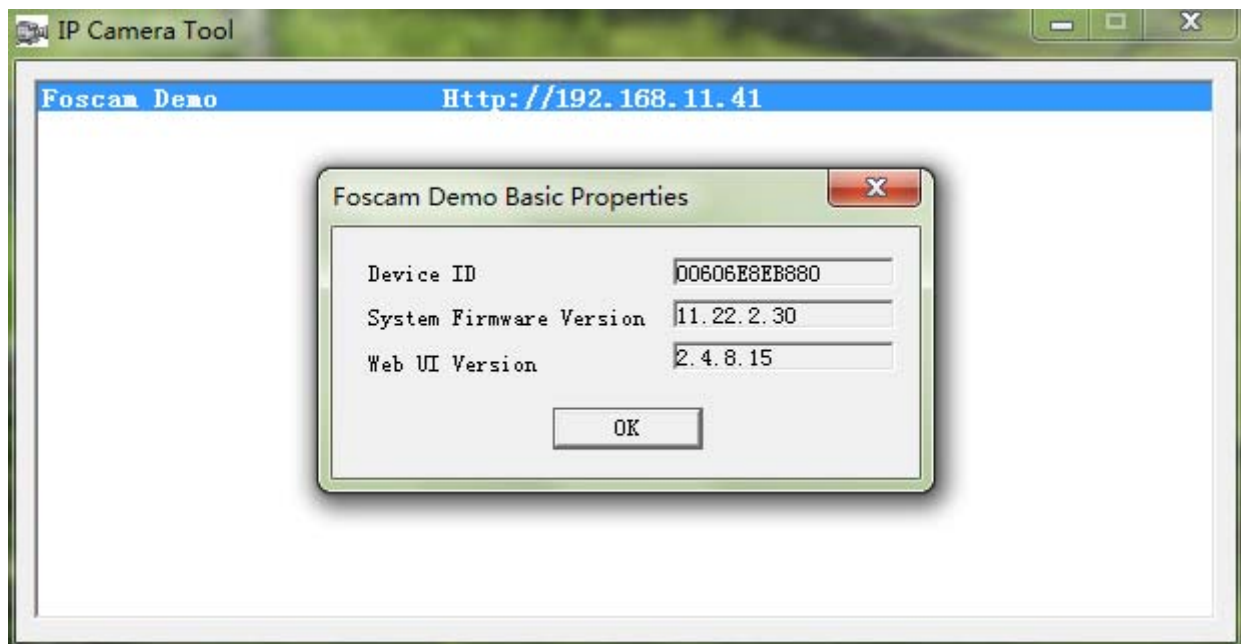


Figure 1.4

Real-time IP Camera Monitoring System

Device Info
Alias Settings
Date&Time Settings
Users Settings
Multi-Device Settings
Basic Network Settings
Wireless Lan Settings
ADSL Settings
UPnP Settings
DDNS Service Settings
Mail Service Settings
FTP Service Settings
Alarm Service Settings
PTZ Settings
Upgrade Device Firmware
Backup & Restore Settings
Restore Factory Settings
Reboot Device
log
Back

Device Status	
Device ID	00606E8EB880
Device Firmware Version	11.22.2.30
Device Embedded Web UI Version	2.4.8.15
Alias	Foscam Demo
Alarm Status	None
DDNS Status	No Action
UPnP Status	No Action

Figure 1.5

The END