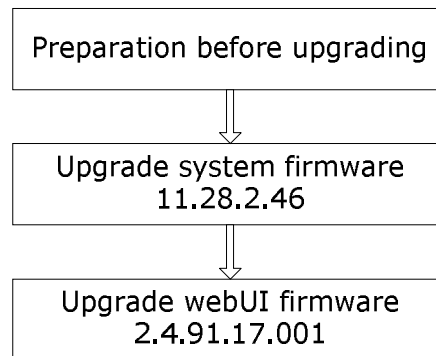


Upgrade Guidance for FI8909W

Note:

Please check the model number before upgrading. This firmware is for FI8909W. The firmware 11.13.2.xx, 11.13.1.xx and 11.40.2.xx **cannot** upgrade to this version. The firmware 11.28.2.xx can upgrade to this version. Updating with the wrong firmware could severely damage and/or break your camera. Please make sure the firmware is correct.

Upgrading procedure:

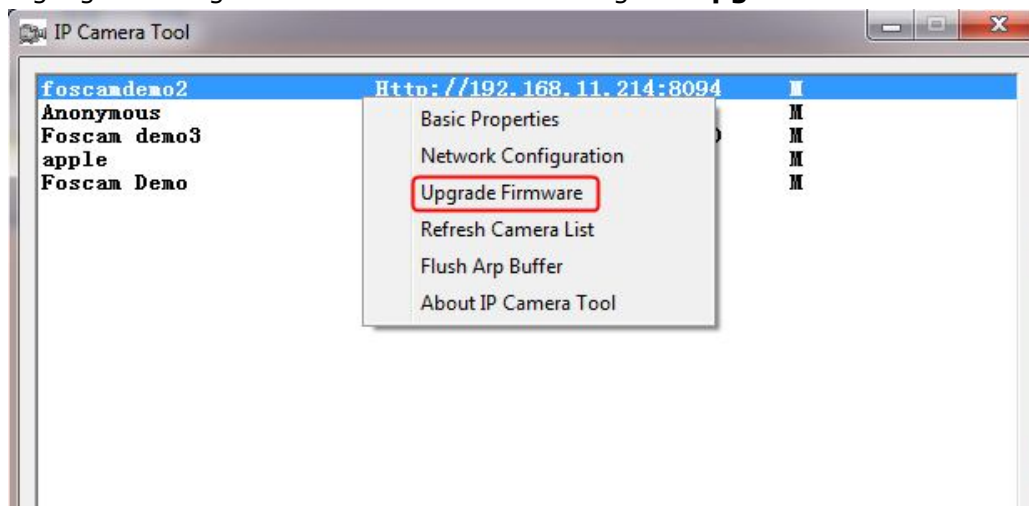
**Step 1: Preparation before upgrading.**

Connect camera to router with an Ethernet cable to upgrade firmware. DO NOT upgrade firmware via the wireless.

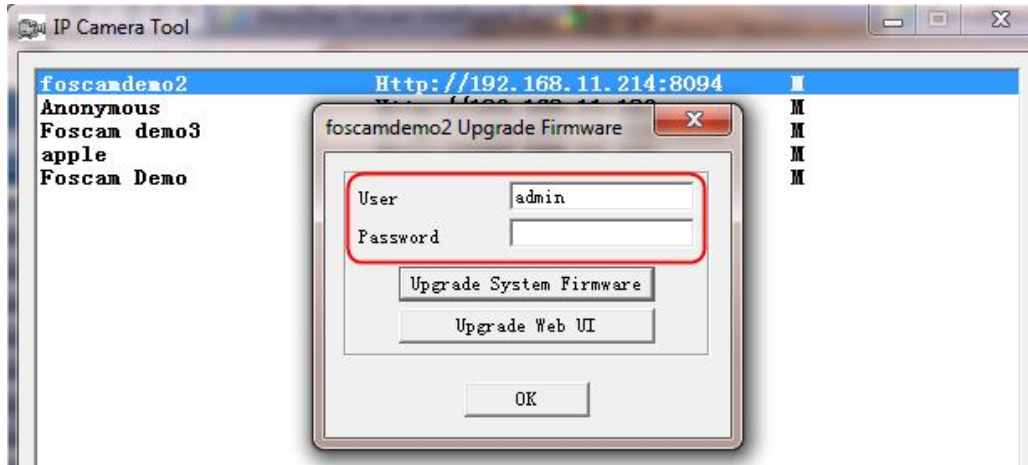
Keep power on during the upgrading.

Step 2: Upgrade system firmware firstly.

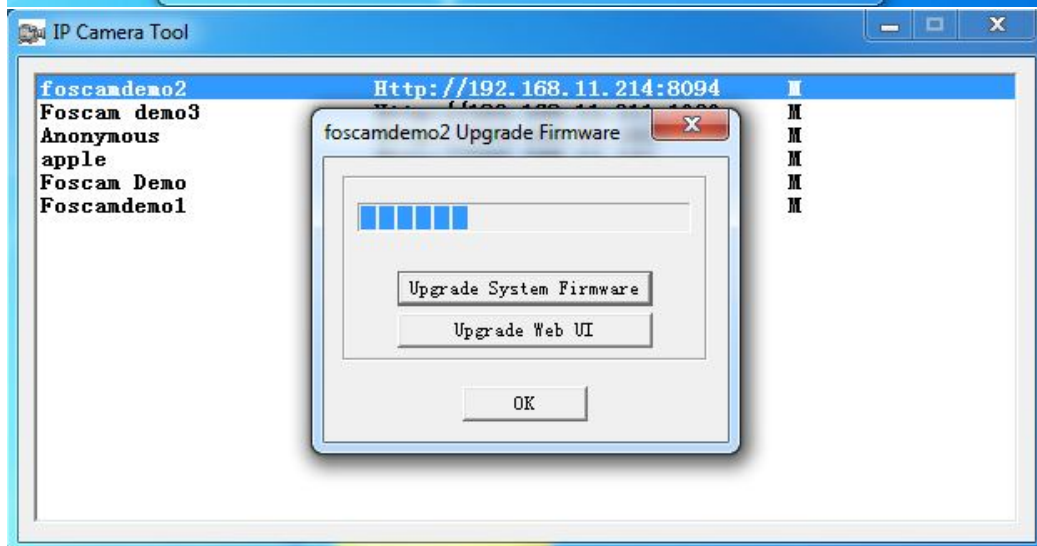
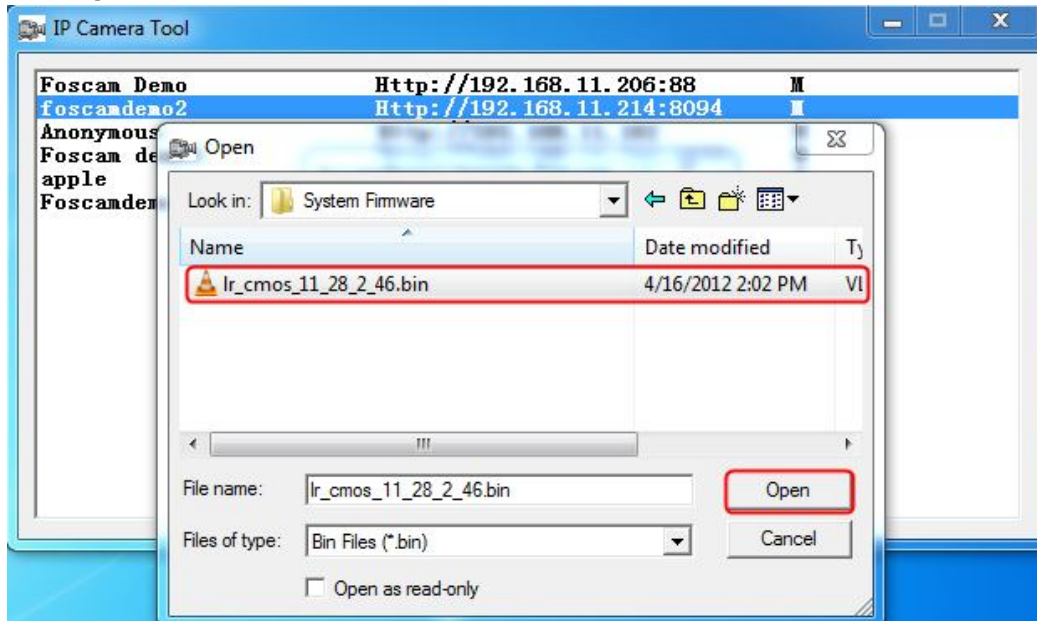
Highlight and right click the camera and then go to **Upgrade Firmware**.



Enter the user and password of camera. The default user is 'admin' and password is blank.



Click **Upgrade System Firmware** → select **lr_cmos_11_28_2_46.bin** → click **Open**.

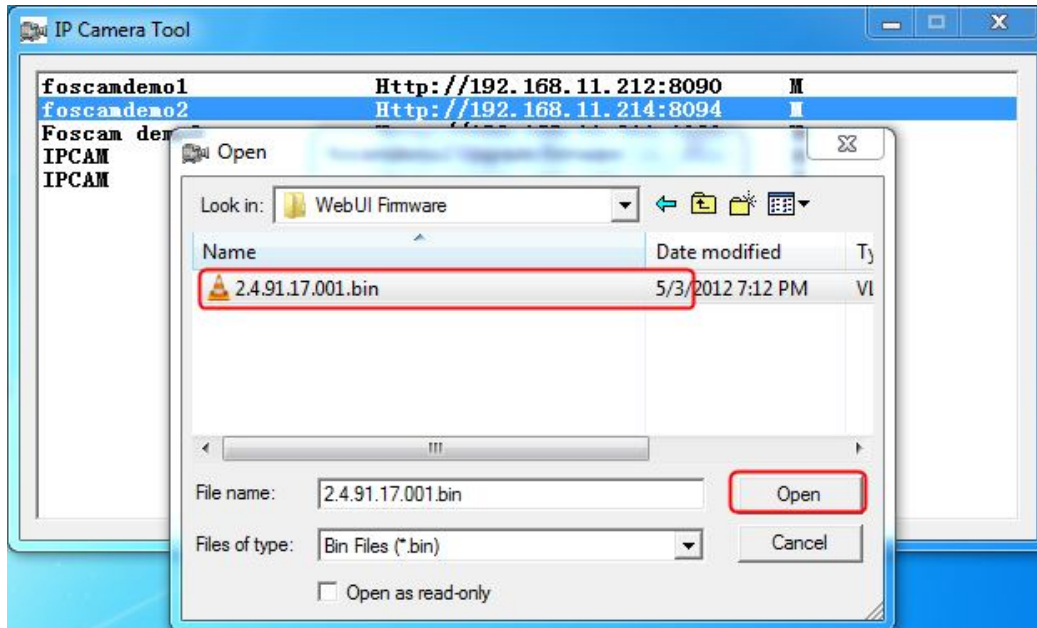


Camera will reboot after upgrading the system firmware. The IP address will disappear from the IP Camera Tool for about 60 seconds. Please upgrade webUI after camera's IP is back to IP Camera Tool.

Don't power off the camera before the IP camera tool find the camera again.

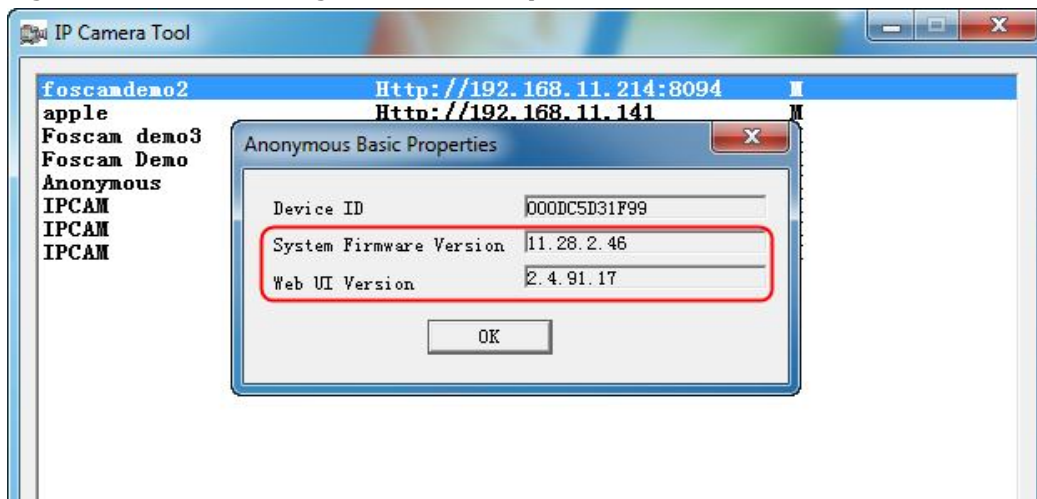
Step 3: Upgrade webUI secondly.

Right click camera and go to Upgrade Firmware. Click **Upgrade Web UI** → select **2.4.91.17.001.bin** → click **Open**.



Don't power off the camera before the IP camera tool find the camera again.

Right click camera and go to **Basic Properties** to check the firmware version.



You also can update firmware on Real-time IP Camera Monitoring System page.
For Administrator → Upgrade Device Firmware.

Then end.