

Upgrade guidance for FI8909W-NA

1、 Please check your current firmware version of your camera.

The new software we are going to update is:

Firmware version: 11.13.2.17

Web UI version: 2.4.91.14

Caution:

If your camera's firmware version is 11.13.1.46&2.4.91.12 now, you can upgrade it to the new version. If your camera has other versions of firmware (not mentioned above), please contact tech@foscam.com and confirm with our engineers whether your camera can upgrade.

Please upgrade the firmware carefully or it will crash your camera.

Please check if `lr_coms_11_13_2_17.bin` is 1,343KB,

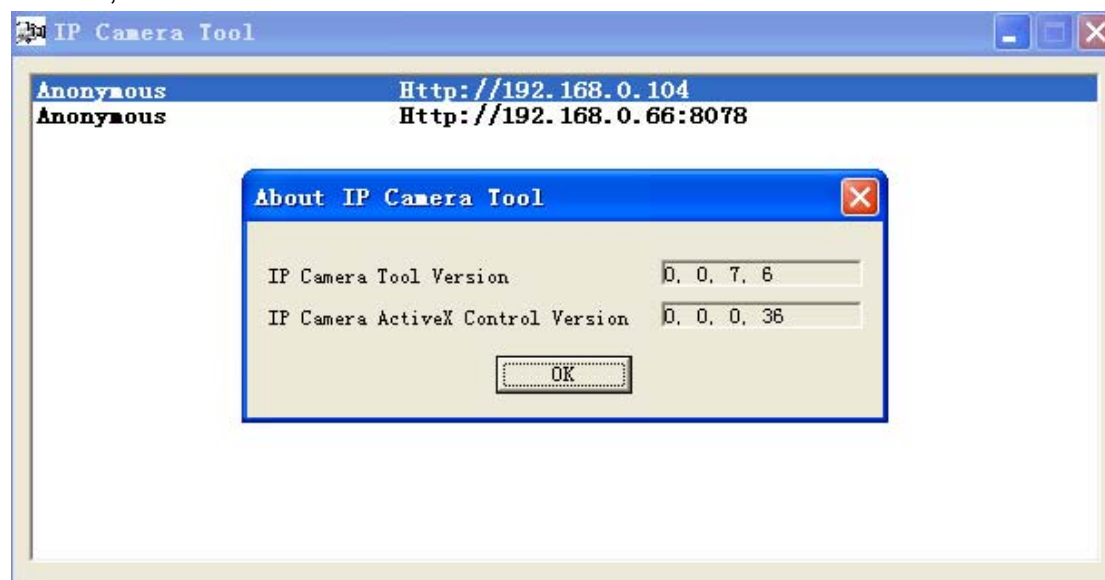
`2.4.91.14.bin` is 720KB before upgrade.

If it is, you can upgrade, if not, please download the firmware again until it fits the exact size. **Or it may crash your camera!!!**

2、 Preparation before upgrade.

1) Download the upgrade package and the new IP Camera Tool.

2) Uninstall the old IP camera tool and install the new one. Then restart your computer. Please check if the tool has the right version after doing that. Click right mouse and choose about IP camera tool. The correct version is 0.0.7.6, ActiveX control version is 0.0.0.36.

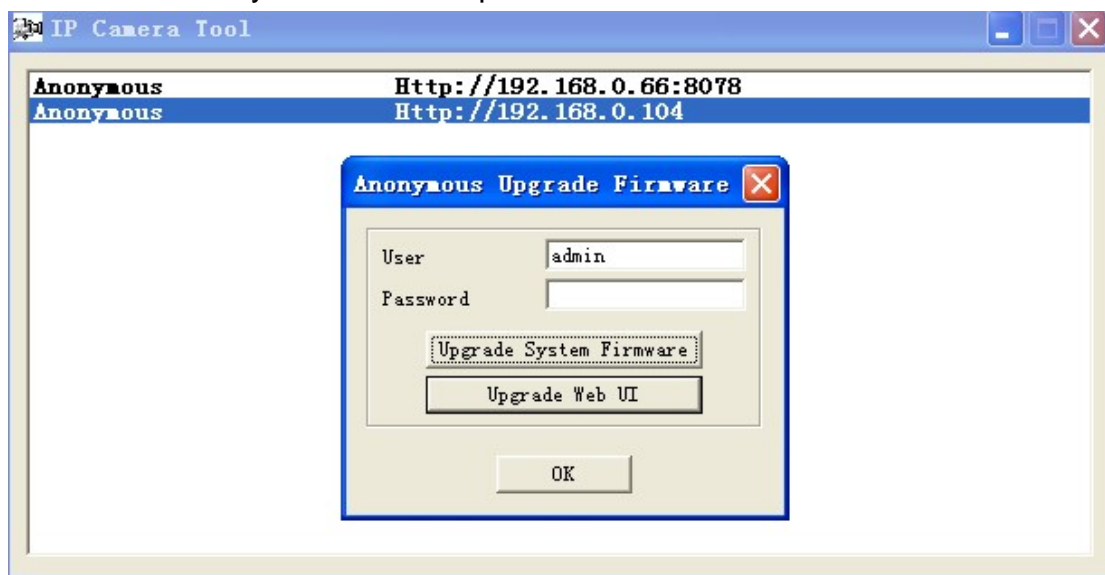


3) Plug the network cable and power

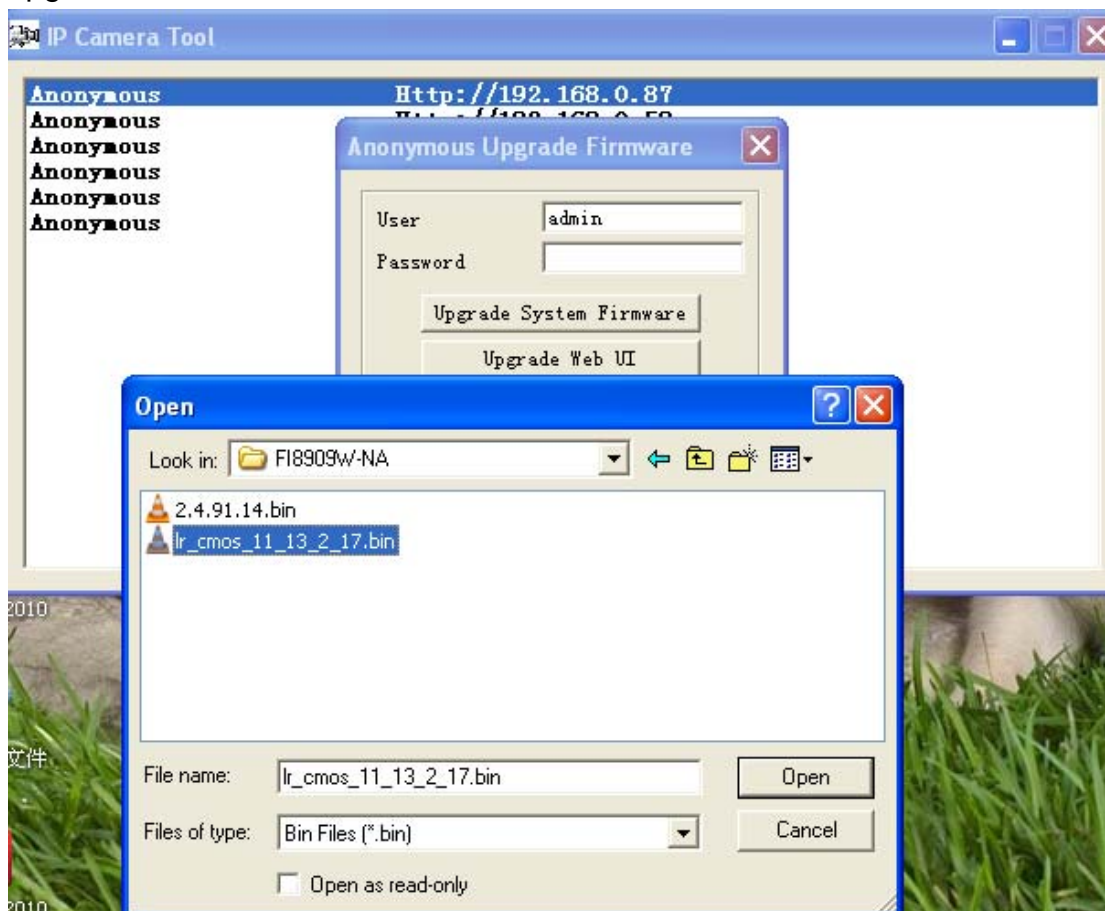
All done, now let's update the system firmware first and then web UI.

3、Upgrade the system firmware first.

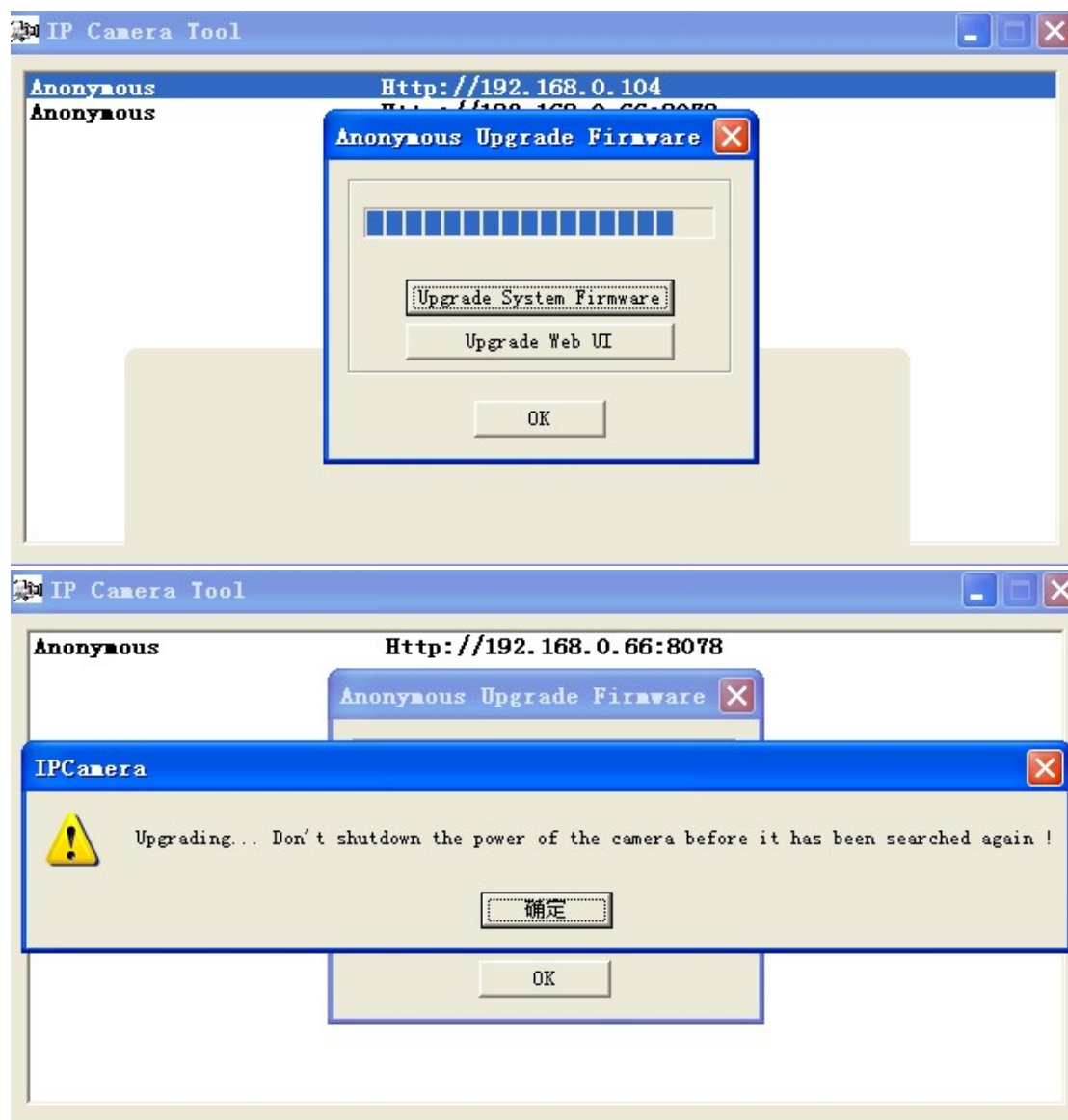
Click the right mouse on the ip in the IP camera tool and choose “Upgrade Firmware”. Then you will see the picture below.



Click Upgrade System Firmware, then choose lr_coms_11_13_2_17.bin to upgrade.



Caution: Make sure do not shut down the power when upgrade.

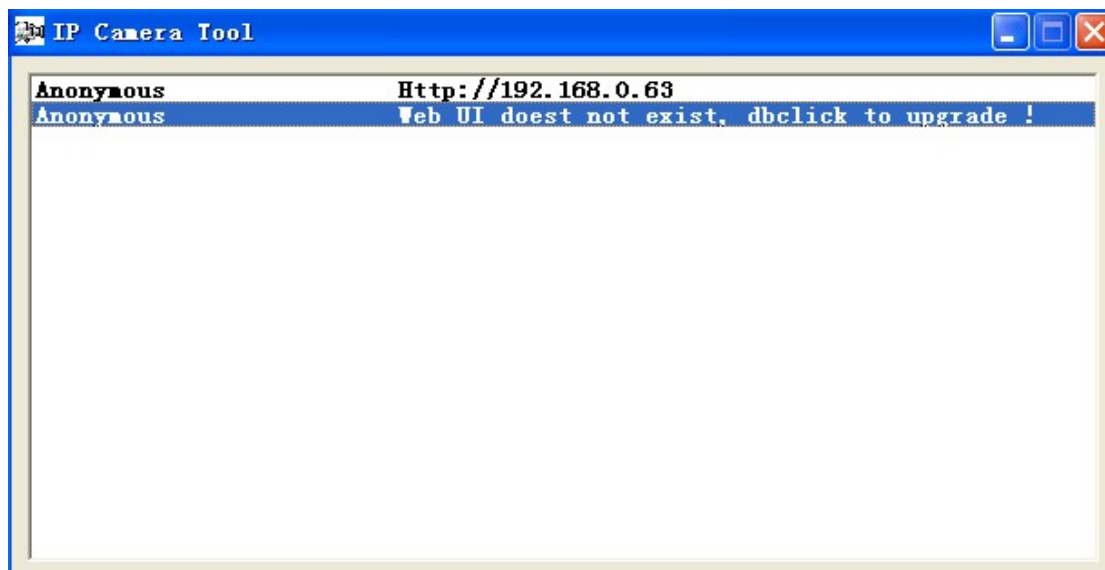


Please do not plug out the power before the ip camera tool find the camera again.

4、Upgrade the Web UI.

Wait about 60 seconds, You may find the following information in the IP camera tool after the camera reboot.

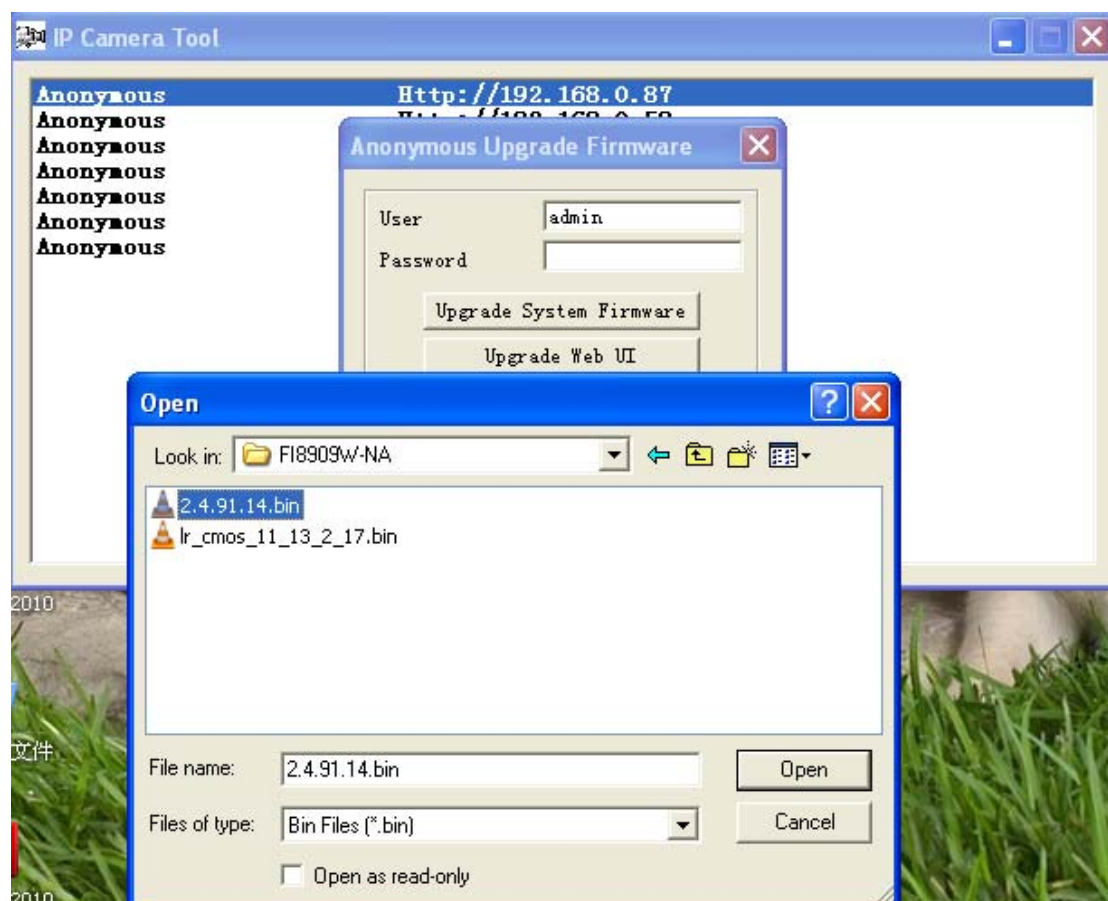
Web UI doest not exist, dbclick to upgrade!



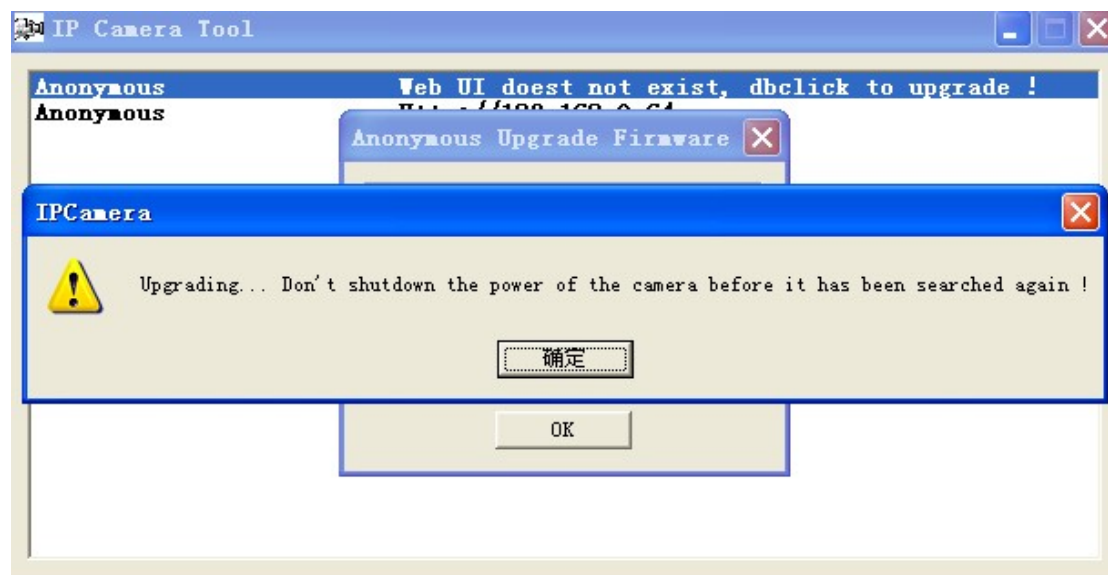
Dbclick the information and choose "Upgrade Web UI".



Then choose 2.4.91.14.bin to upgrade.



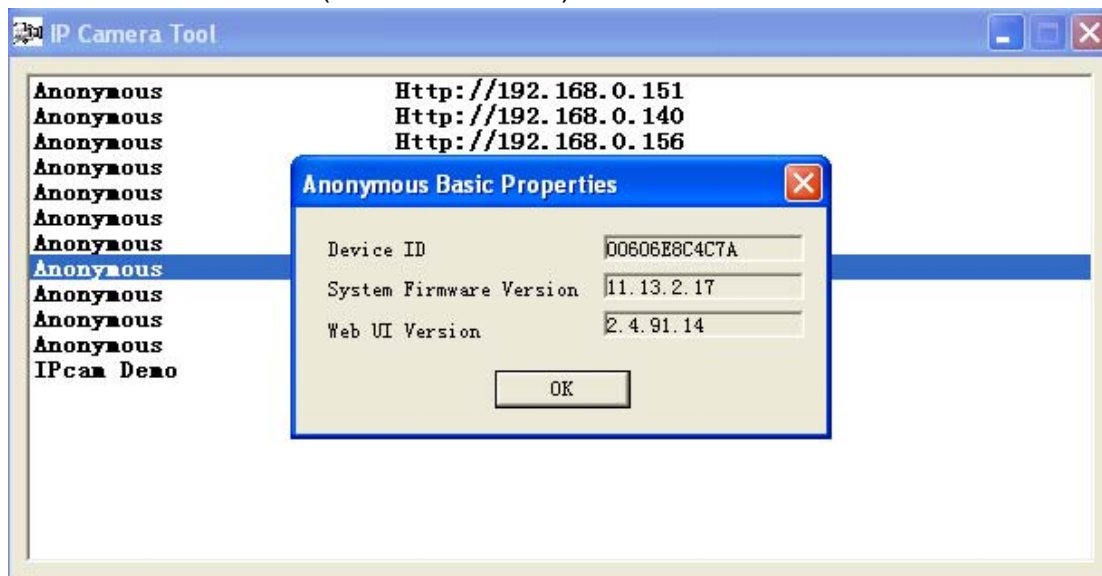
Do not shut down the power of the camera during the upgrade.



After you upgrade both the system firmware and Web UI, please check if the upgrade is successful.

Click the right mouse on the ip address and choose "Basic Properties".

Or enter the interface (for administrator) and check the Device Info.



Real-time IP Camera Monitoring System

Device Info	Device Status
Alias Settings	Device ID: 00606E8C4C7A
Date&Time Settings	Device Firmware Version: 11.13.2.17
Users Settings	Device Embedded Web UI Version: 2.4.91.14
Multi-Device Settings	Alias: Anonymous
Basic Network Settings	Alarm Status: None
Wireless Lan Settings	DDNS Status: No Action
ADSL Settings	UPnP Status: No Action
UPnP Settings	
DDNS Service Settings	
Mail Service Settings	
FTP Service Settings	
Alarm Service Settings	
Upgrade Device Firmware	
Backup & Restore Settings	
Restore Factory Settings	
Reboot Device	
log	
Back	

END