

## Check Current Firmware Version For FI8918E

### 1、 Please check your current firmware version of your camera.

The **current firmware version** is:

Device Firmware Version: **11.22.2.38**

Device Embedded Web UI Version: **2.4.18.17**

Note: **Currently, 11.22.2.38 & 2.4.18.17 is original firmware of FI8918E and it is also the latest firmware for FI8918E. Other model cameras can not upgrade with this firmware version. If you upgrade this firmware wrongly for other models, your camera must be dead and need send to repair!!**

### 2、 You can check current firmware version of your camera in the IP Camera Tool at **Basic Properties** as Figure 1.1 or on **Device Information** as Figure 1.2.

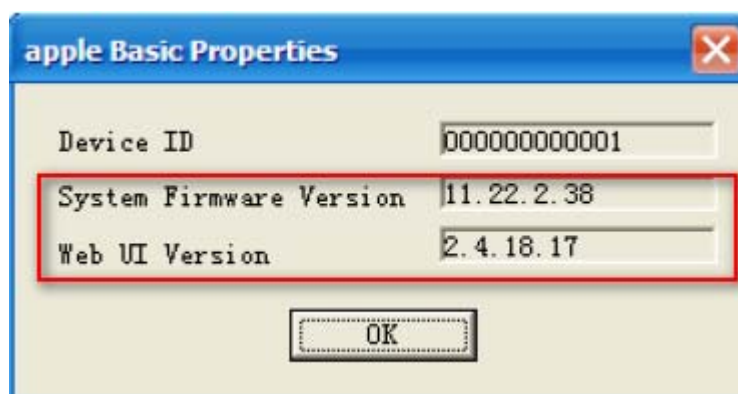


Figure1.1

Real-time IP Camera Monitoring System	
Device Info	
Alias Settings	
Date&Time Settings	
Users Settings	
Multi-Device Settings	
Basic Network Settings	
ADSL Settings	
UPnP Settings	
DDNS Service Settings	
Mail Service Settings	
MSN Settings	
FTP Service Settings	
Alarm Service Settings	
PTZ Settings	
Upgrade Device Firmware	
Backup & Restore Settings	
Restore Factory Settings	
Reboot Device	
log	
Back	

Device Status	
Device ID	000000000001
Device Firmware Version	11.22.2.38
Device Embedded Web UI Version	2.4.18.17
Alias	Anonymous
Alarm Status	None
DDNS Status	No Action
UPnP Status	No Action
MSN Status	No Action

Figure1.2

The END